

# REMEHA TOUCH

Biomass Heating Control



REMEHA TOUCH BIOMASS HEATING CONTROL

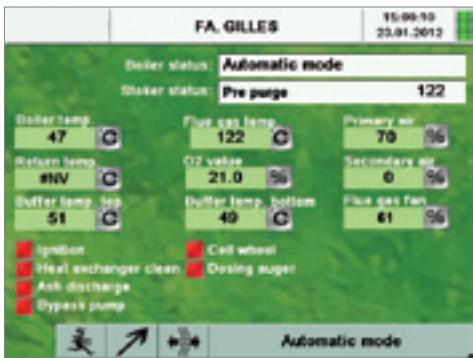
Intelligent control with  
modern touchscreen  
MOD-BUS COMPATIBLE

**CR remeha**  
commercial

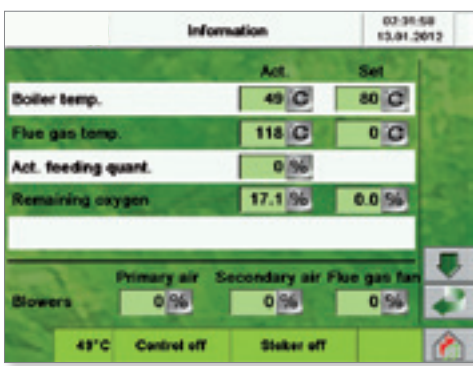
 **TreadLightly**  
ON THE PLANET



Programming and updates possible via USB stick

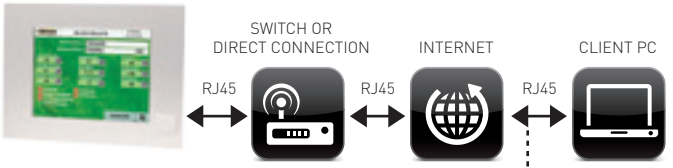


- Boiler & stoker status displayed
- Status display => which components are currently active
- All important settings can be seen on the main screen, such as temperatures, O2 value, fans, etc.
- Chimney sweep function



- Display of the actual values and the set points
- All fans performances visible

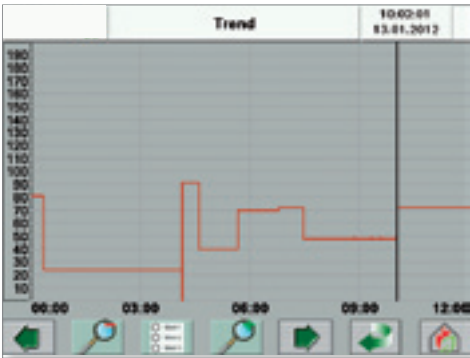
### Visualisation link / GSM-Visualisation



### Visualisation by VNC-Viewer



### Communication via smartphone application



- Trend logging over 6 months
- Trend log exportable to USB stick
- Parameters can be shown in Excel
- All values displayed on the controller can be recorded and saved



Language switch ensued direct at the control panel

## Benefits

- Settings for different fuels
- Modulation of the boiler
- Convenient setting and alteration of all heating functions via smart phone or tablet PC / Mac
- Automatic error message notification via e-mail
- Remote servicing of the boiler via internet
- Graph record of all heating parameters on the internal memory
- Modular design of the control
- Sturdy structure
- Cascade control up to 5 boilers
- Password protected

## Optional

- Status request and alterations possible via SMS (current boiler temperature, buffer temperature, operating mode, boiler status, etc.)
- Automatic error message notification via SMS

INFORMATION FROM YOUR HEATING SYSTEM ALWAYS AND EVERYWHERE

Convenient change  
of settings of all  
functions with  
your Touch-Pad  
or mobile device



PART OF BOR THERMEA

## Remeha Commercial

Remeha House  
Molly Millars Lane  
Wokingham  
Berkshire RG41 2QP  
T: 0118 978 3434  
F: 0118 978 6977  
E: boilers@remeha.co.uk

[www.remeha.co.uk](http://www.remeha.co.uk)



Remeha is committed to carbon offsetting